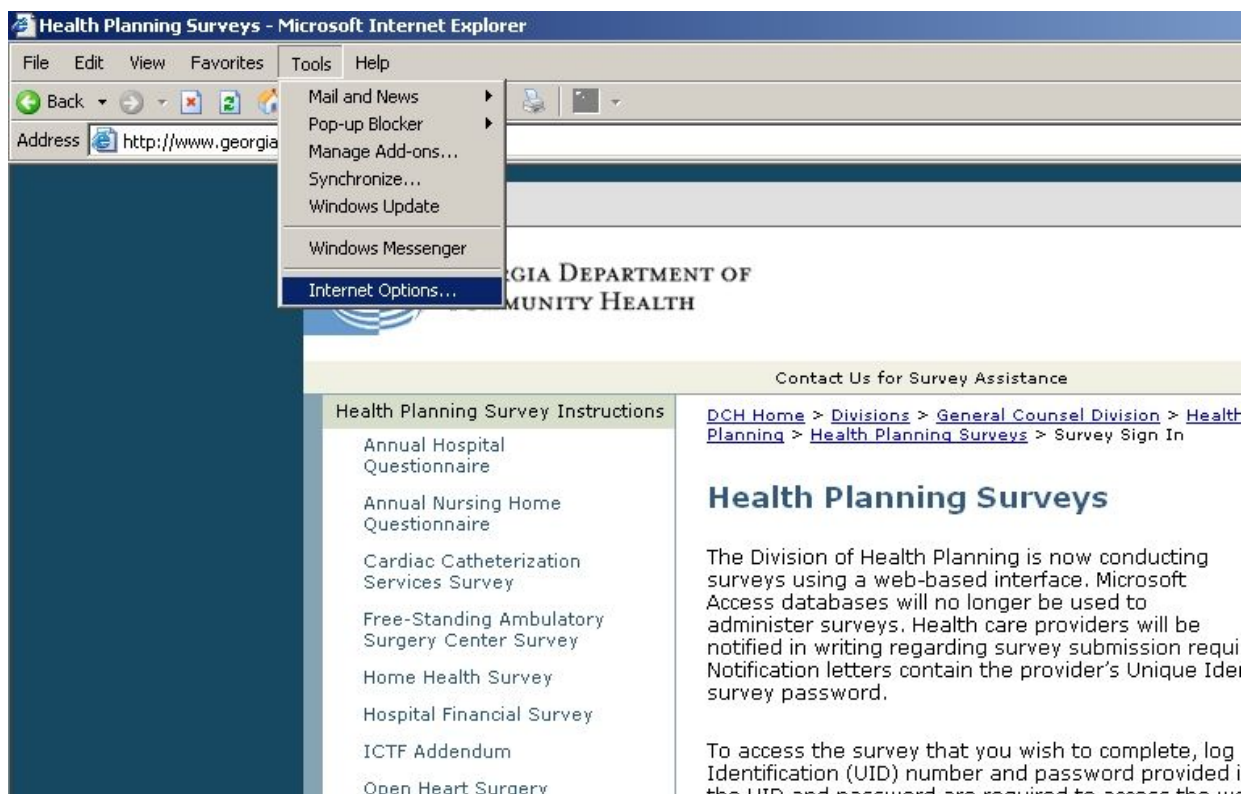


How To Disable Pop-Up Blocker for Health Planning Surveys

Health Planning surveys can be completed online using a web-based interface. The web-based interface requires pop-up windows in order to function properly. Internet browsers usually block pop-up windows by default. Users must disable the pop-up blocking feature to complete the survey. The following steps will provide directions for disabling the default pop-up blocker in Microsoft Internet Explorer version 6 and later.

Note: Internet Explorer should be used to complete the web-based interface. Other browsers, such as Mozilla Firefox or Safari, are not supported at this time.

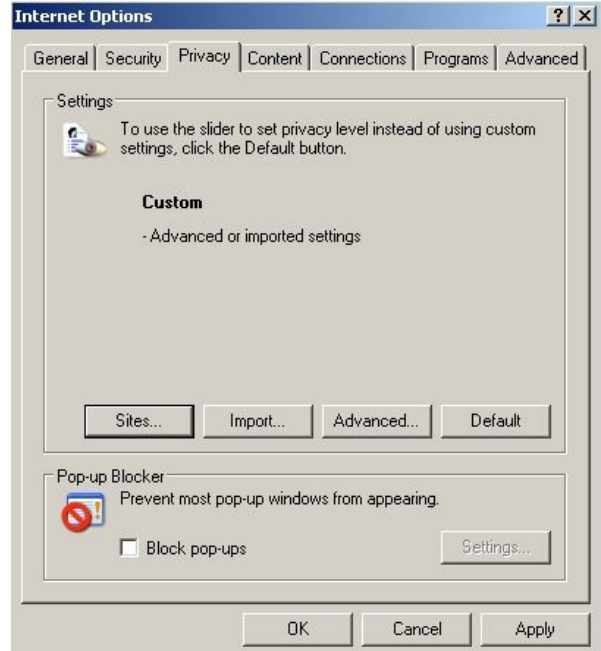
Step 1: Open Internet Explorer and select the Tools menu. Then Select “Internet Options”.



The screenshot shows a Microsoft Internet Explorer browser window titled "Health Planning Surveys - Microsoft Internet Explorer". The address bar displays "http://www.georgia...". The Tools menu is open, showing options such as "Mail and News", "Pop-up Blocker", "Manage Add-ons...", "Synchronize...", "Windows Update", "Windows Messenger", and "Internet Options...". The "Internet Options..." option is highlighted. The background of the browser shows a webpage for the "GEORGIA DEPARTMENT OF COMMUNITY HEALTH" with a "Health Planning Survey Instructions" sidebar and a main content area titled "Health Planning Surveys".

Step 2:

Option A: Select the “Privacy” tab. Then make sure “Block pop-ups” is NOT checked. Then click “Apply” and complete the survey.



Step 2:

Option B: Select Pop-up Blocker Settings button from the “Privacy” tab. Then Add www.georgiahealthdata.info to the list of Allowed Sites. This will allow pop-up windows only for the Health Planning surveys pages.

